

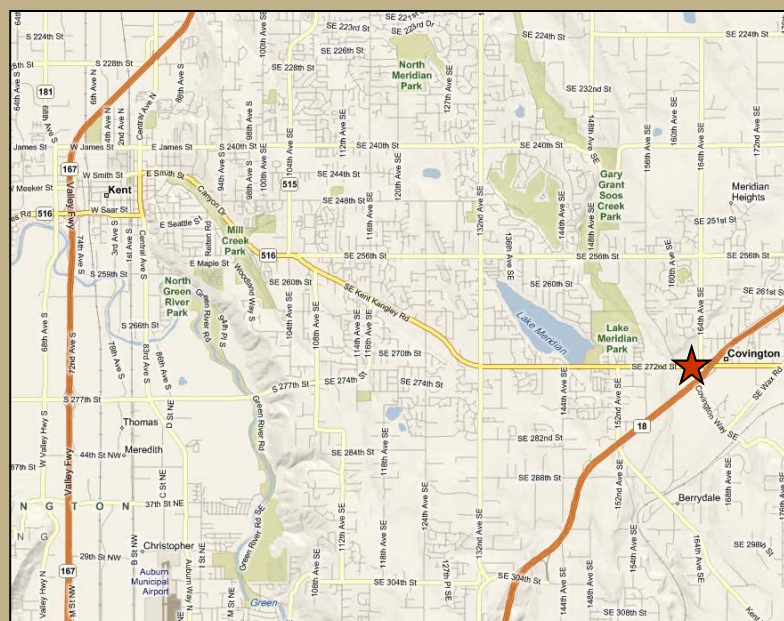
# PRIME CORNER FOR LEASE - HIGHWAY FRONTAGE

27222 Covington Way SE, Covington, Washington



27222 Covington Way SE, Covington, WA

- Previously new car dealership (Bowen Scarff Ford)
- Potential for long or short term leases
- Zoned N-2 (soon to become GC)
- Total site area: 159,300 SF (3.66 acres)
- Building size: 13,590 SF
- \$32,500 per month NNN
- 100 percent lit and asphalted
- Use of \$70,000 electronic message center
- Underground storm water retention and state of the art site lighting
- New building built in 2004 flexible to many retail uses
- Major retailers within Covington: Costco, Kohl's, Fred Meyer, Wal-Mart, Office Depot, Home Depot, & LA Fitness. All of which have landed in Covington within the past five years.



## REGENCY GROUP, INC.

Commercial Real Estate

Brian Pounder

425.990.3463 (Direct)

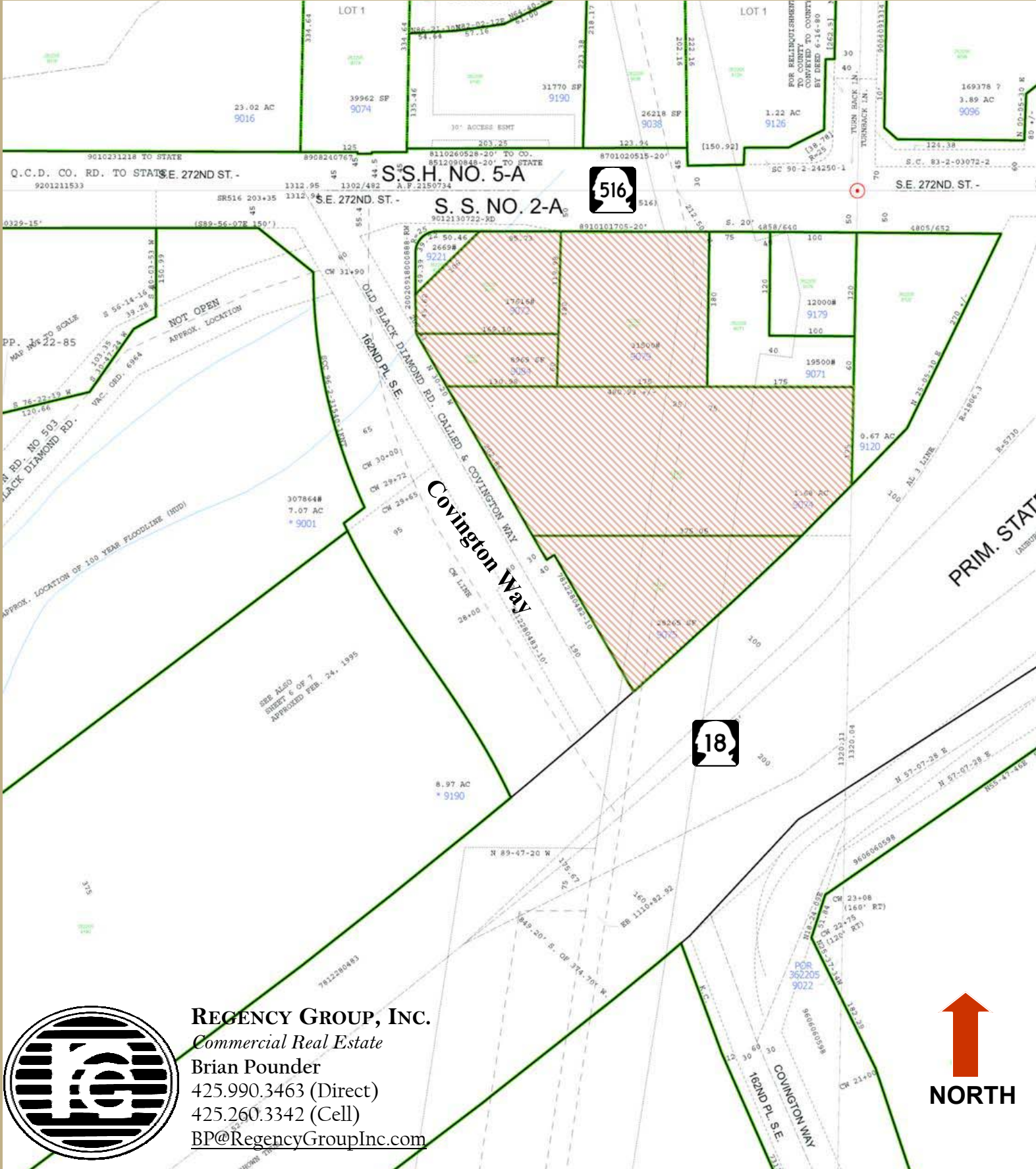
425.260.3342 (Cell)

[BP@RegencyGroupInc.com](mailto:BP@RegencyGroupInc.com)



# PRIME CORNER FOR LEASE - HIGHWAY FRONTAGE

27222 Covington Way SE, Covington, Washington



**REGENCY GROUP, INC.**  
*Commercial Real Estate*  
Brian Pounder  
425.990.3463 (Direct)  
425.260.3342 (Cell)  
[BP@RegencyGroupInc.com](mailto:BP@RegencyGroupInc.com)



**NORTH**